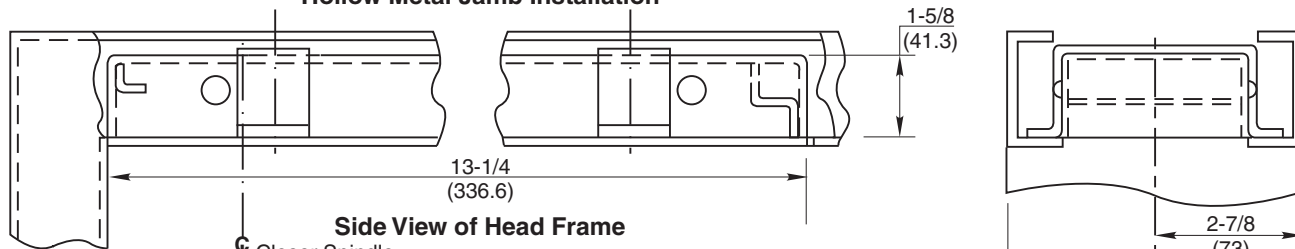
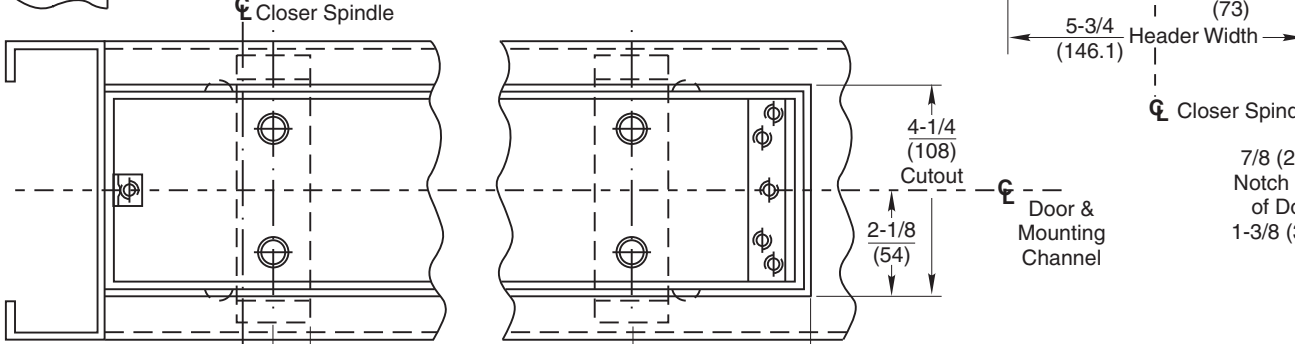


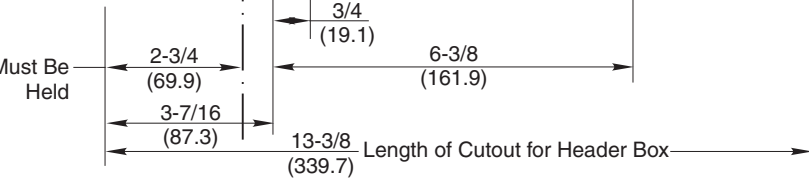
Hollow Metal Jamb Installation



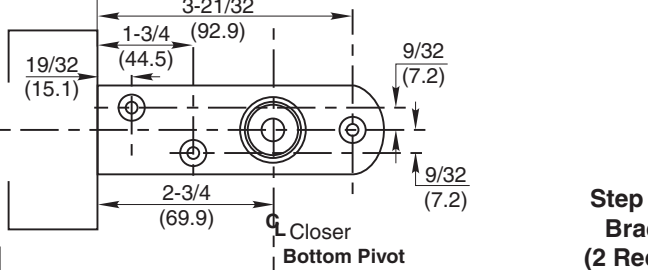
Side View of Head Frame



Step No. 3 Head Frame Installation

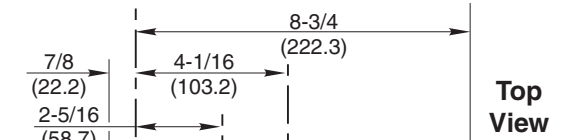
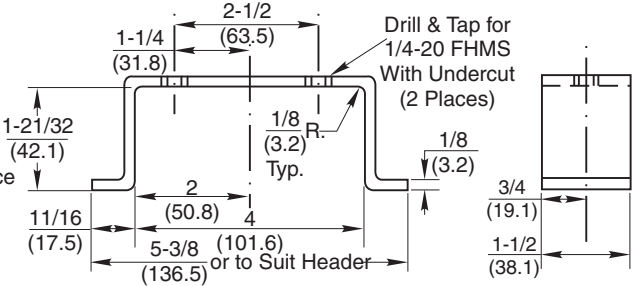


Under Side of Head Frame

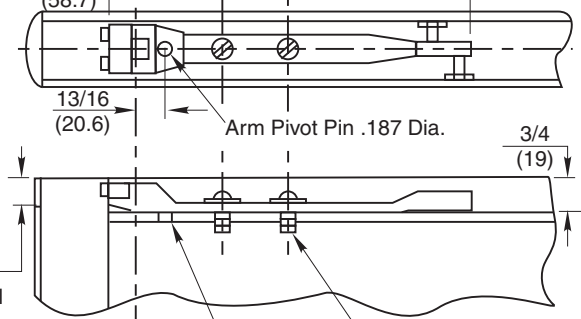


- NOTES:**
1. Do not scale drawing.
 2. 2" (50.8) x 5-1/2" (139.7) minimum width head frame.
 3. Single acting operation requires a door stop on the underside of frame.
 4. Door radius recommended is 2-5/8" (66.7).
 5. All dimensions given in inches (mm).

Step No. 1 Bracket (2 Req'd. by Others)

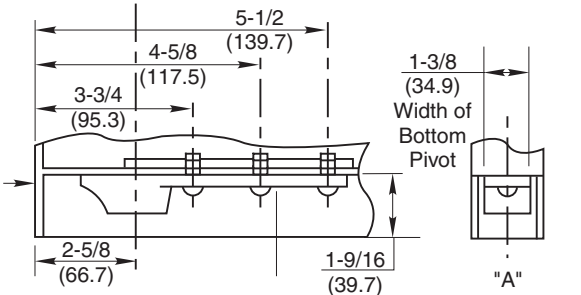


Top View



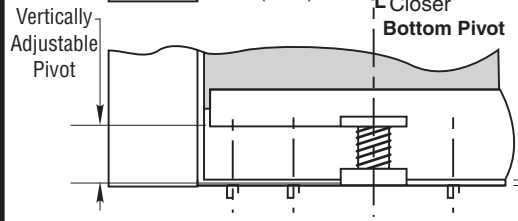
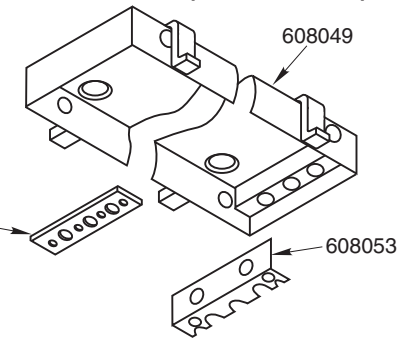
Side View

Provide Clearance Hole for Pin



Side View (Bottom Pivot)

Step No. 2 Mounting Channel Assembly



M608 Series Overhead Concealed Door Closer Center Pivoted for Metal Doors and Frames

RIXSON®
ASSA ABLOY

www.rixson.com

TEMPLATE NUMBER	DATE
OC60435	05-09