

# Heavy-Duty Double-Acting Center Hung Floor Closers

## Model 30 Center Hung

### Application

- Double Acting, Non-handed
- Interior or Exterior<sup>^</sup> Doors
- Weight to 200 lbs.
- Sizes up to 4'0"x8'6"\* (1219x2591mm)



ANSI/C06012

\* For doors taller than 8'6" use top pivot # 345 in lieu of 340  
<sup>^</sup> Primary means of egress should not use double-acting closers

## Model 40 Center Hung

### Application

- Double Acting, Non-handed
- Interior or Exterior<sup>^</sup> Doors
- Weight to 300 lbs.
- Sizes up to 4'0" x 8'6"\* (1219x2591mm)



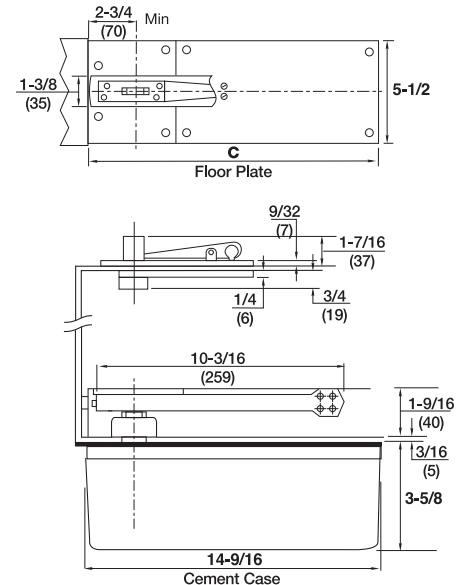
ANSI/C06012

\* For doors taller than 8'6" use top pivot # 345 in lieu of 340  
<sup>^</sup> Primary means of egress should not use double-acting closers

### Product Description & Features

- Centering arm with adjustment screws in faces of door (*critical for double acting doors*)
- Adjustable closing speed valves for each direction of door swing
- Mechanism returns door to center
- Available non-hold open (N) or automatic hold open (A) at 90° (*requires 93° swing*) or 100° (*requires 103° swing*)
- Not available in Delayed Action (DA)
- Maximum door opening 103°
- Auxiliary door stop required, overhead or floor type
- Models available to meet ICC/ANSI A117.1 low opening force requirements (*consult factory*)
- Cold weather fluid option – specify "CWF"
- Sealed closer option – specify "SC"
- Available with floor plate or threshold installation (floor plate shown)
- Steel cement case
- Arm reinforcement bracket for wood doors – prefix "W"
- Standard top pivot: #340 included
- Not allowed for fire rated doors
- Furnished with wood and machine screws
- Extended spindles available in 1/2" increments up to 2" longer than standard

### Technical Information

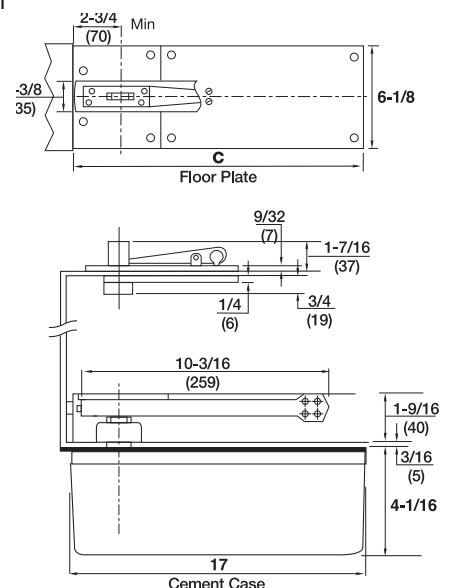


Radius door

### Product Description & Features

- Centering arm with adjustment screws in faces of door (*critical for double acting doors*)
- Adjustable closing speed valves for each direction of door swing
- Mechanism returns door to center
- Available non-hold open (N) or automatic hold open (A) at 90° (*requires 93° swing*) or 100° (*requires 103° swing*)
- Not available in Delayed Action (DA)
- Maximum door opening 103°
- Auxiliary door stop required, overhead or floor type
- Models available to meet ICC/ANSI A117.1 low opening force requirements. Prefix "PH" (*consult factory*)
- Cold weather fluid option – specify "CWF"
- Sealed closer option – specify "SC"
- Available with floor plate or threshold installation (floor plate shown)
- Steel cement case
- Arm reinforcement bracket for wood doors – prefix "W"
- Standard top pivot: #340 included
- Not allowed for fire rated doors
- Furnished with wood and machine screws
- Extended spindles available in 1/2" increments up to 2" longer than standard

### Technical Information



Radius door