

Model 117-1/4

Application

Interior Doors
Weight to 250 lbs.*
Door Width up to 3'6" (1067mm)
Handed



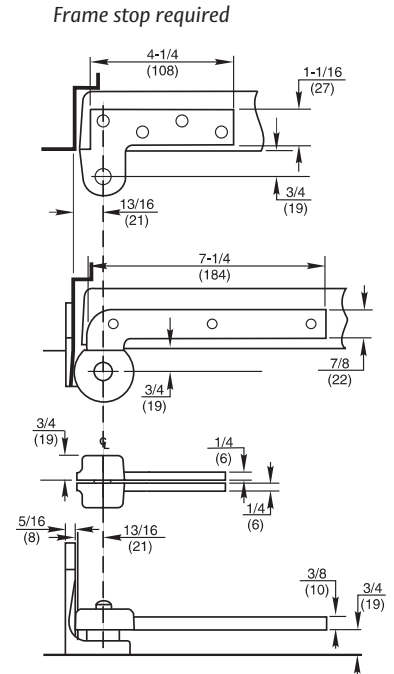
BHMA/ANSI NO: C07172

* Door size & weight guidelines are determined using the appropriate number of intermediate pivots

Product Description & Features

- Standard top pivot 180 included
- 119 intermediate pivot recommended (order separately); see page 136
- Bottom pivot mortised into side jamb
- Not available for fire-rated doors
- Non-ferrous base material
- Doors up to 90" (2286mm) in height should use one intermediate pivot. Each additional 30" (762mm) of door height warrants another intermediate pivot
- 3/4" (19mm) offset (measured from centerline of pivot to face of door)
- Door edges must be beveled 1/8" in 2"
- Weight of door borne by floor
- Furnished with wood and machine screws
- Extended spindles available in 1/2" (13mm) increments up to 2" (51mm) longer than standard

Technical Information



Model 117

Application

Interior Doors
Weight to 300 lbs.*
Door Width up to 3'6" (1067mm)
Handed



BHMA/ANSI NO: C07162/C07202

* Door size & weight guidelines are determined using the appropriate number of intermediate pivots

Product Description & Features

- Standard top pivot 180 included
- 119 intermediate pivot recommended (order separately); see page 136
- Bottom pivot mortised into floor
- Available for fire door assemblies up to three hours – specify F117. Intermediate pivot required by UL. Specify FM19, (order separately), see page 136
- For 20-minute label suffix “-20” to the part number
- Non-ferrous base material
- Doors up to 90" (2286mm) in height should use one intermediate pivot. Each additional 30" (762mm) of door height warrants another intermediate pivot
- 3/4" (19mm) offset (measured from centerline of pivot to face of door)
- Available for 1-1/2" (38mm) offset (door weight 150lbs) for doors with cladding or frame molding.
- Door edges must be beveled 1/8" in 2"
- Furnished with wood and machine screws
- Extended spindles available in 1/2" (13mm) increments up to 2" (51mm) longer than standard
- Doors will swing 180°, trim permitting

Technical Information

